

Enjoying life a slower pace

The horizontal shower enables you to shower lying down, boosting the bath's credentials as a place of relaxation

Relaxation, not stress; recuperation, not restlessness - Dornbracht and sieger design have expanded their Ambiance Tuning Technique (ATT) technology with a new regenerative application for physical and mental relaxation - since 2012 you can enjoy a shower while lying down. The horizontal shower is suitable for the public spa sector as well as for private bathrooms.

The more hectic our lives become, the more intensively we look for opportunities to relax and escape the stresses of everyday life. Time pressures and fast-paced living, increased mobility and permanent availability promote the desire to enjoy life at a slower, more relaxed pace. Being health-conscious and the associated desire for improved quality of life are increasing worldwide, as is the demand for health and beauty services. Spas across the world offer people a place to recharge their batteries, where water applications are often combined with massage for various types of treatment. This is where sieger design's concept has its origins.

In contrast to standard vertical showers, the horizontal shower is experienced while lying down. The water jets either fall as an invigorating massage with variable temperature, or like a refreshing rain shower, either with waves of water jets or as a gentle spray. From the soles of the feet to the shoulders, all parts of the body are showered either in the same or in opposing directions via six horizontal outlets, or WaterBars, which are located above the heated body support area. You can choose between three pre-programmed settings, which use different types of water jet. The Balancing, Energizing and De-Stressing settings combine various jets and regulate them depending on the amount, jet strength and temperature of the water. The central eTool control panel is integrated into the upper part of the body support area.

The horizontal shower is based on revolutionary concepts that have already played a major role in the development of the Balance Modules. The product range comprises modules that can be combined as you please, for example with side jets or rain panels, giving you the greatest degree of flexibility. In contrast to a pre-defined package, bathrooms can now be completely personalised. The WaterBars are also integrated into the open system architecture of ATT in their purest, most archetypical form.

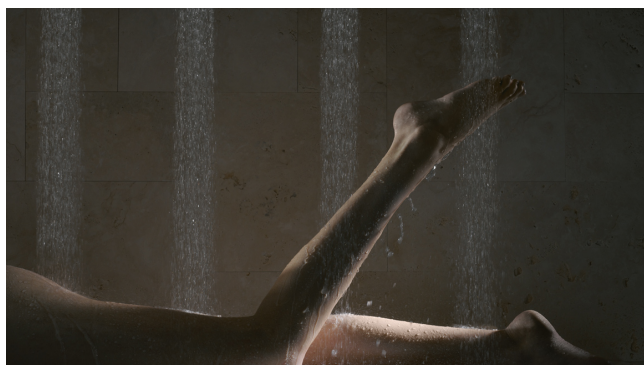
Picture and Movie Copyright: Dornbracht

Photography: Thomas Popinger

Communication Concept, Creation and Architecture for Dornbracht: Meiré und Meiré



sign



Kontakt

sieger design GmbH & Co. KG
Schloss Harkotten
48336 Sassenberg

Telefon +49 5426 9492-0
Telefax +49 5426 9492-89
info@sieger-design.com

Copyright concept & text: sieger design
Picture credit on request